

Grand Army Plaza

Enhancements



Fall
2010

Commissioner Janette Sadik-Khan New York City Department of Transportation
Presented to local Community Boards on April 29, 2010

Project Area



Prospect Heights

Grand Army Plaza

Park Slope

Library,
Gardens,
Museum

Prospect Park

Major Streets



Vanderbilt Ave

Plaza Sts

Union St

Eastern Parkway

Flatbush Ave

Prospect Park West

Park Drives

GAP-DOT Safety Improvements

- 1999-2000 Marking, signs and signal changes
- 2002-04 Library island enlarged, signal changes
- 2004 Plaza Street bicycle lanes
- 2003-06 Park auto hours reduced
- 2006 Vanderbilt Avenue traffic calming
- 2006 Doubled Crossing Time of Prospect Park West
- 2007 Three concrete islands, five crosswalks and protected bike path at southeast

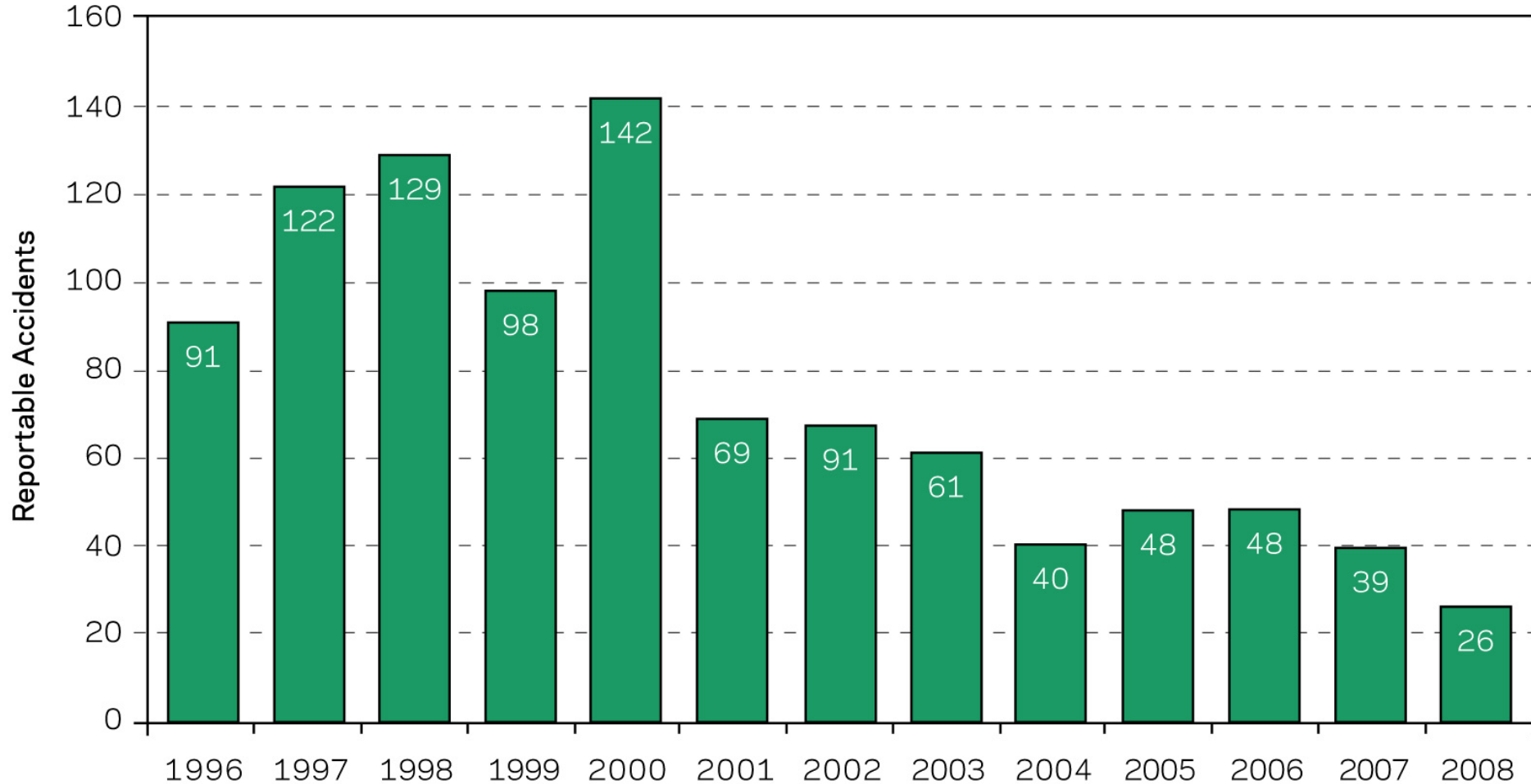


2010 project will integrate with past and planned area projects

GAP-DOT Safety Improvements

Crash Experience at Grand Army Plaza

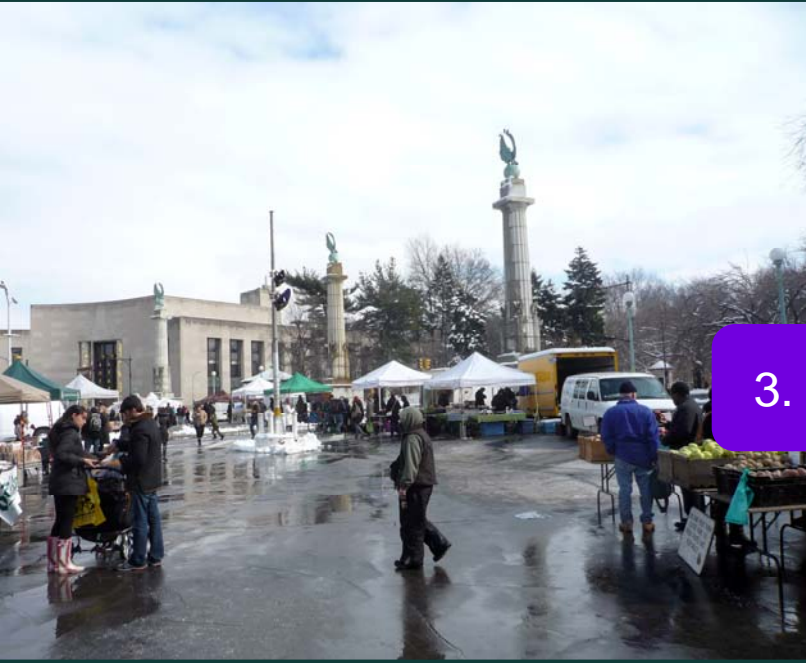
Source: NYS DOT



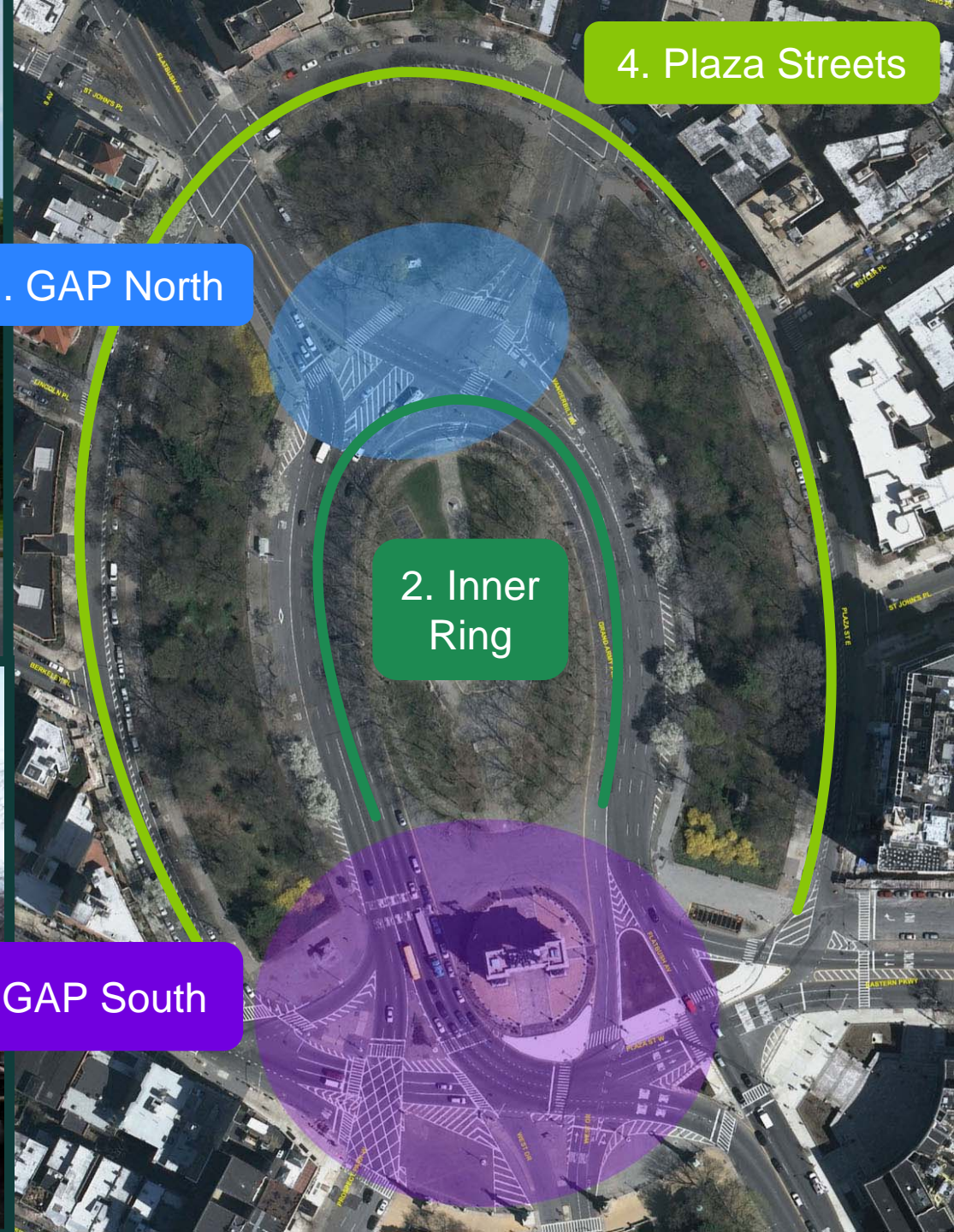
Focus Areas



1. GAP North



3. GAP South



4. Plaza Streets

2. Inner Ring

1. GAP North – Issues

Incomplete pedestrian network

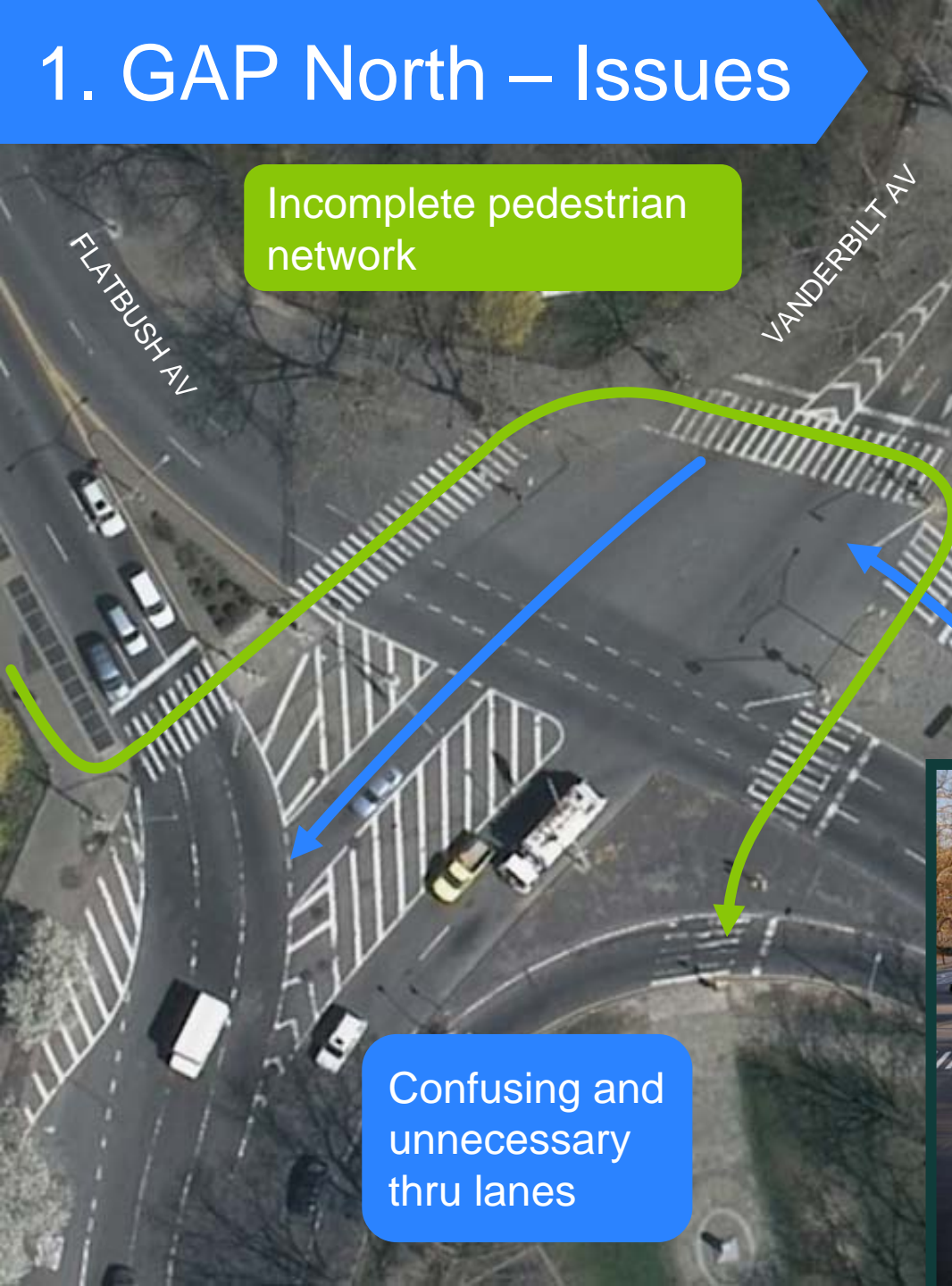
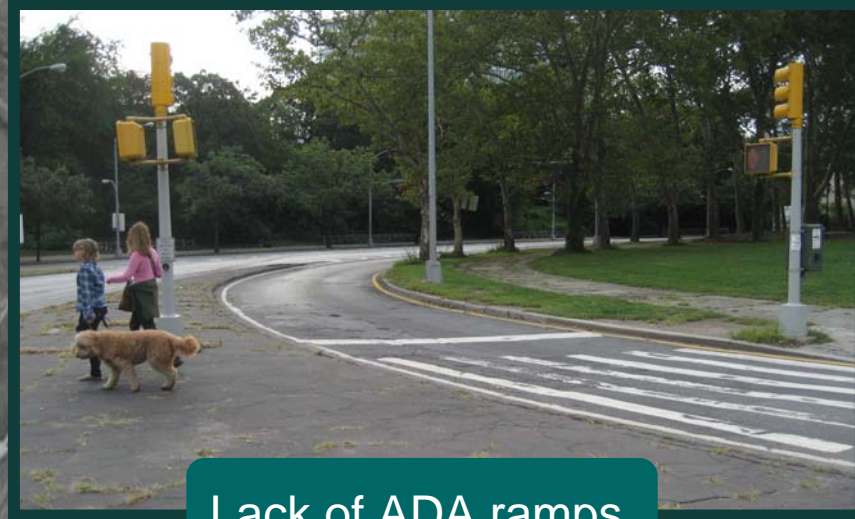
FLATBUSH AV

VANDERBILT AV

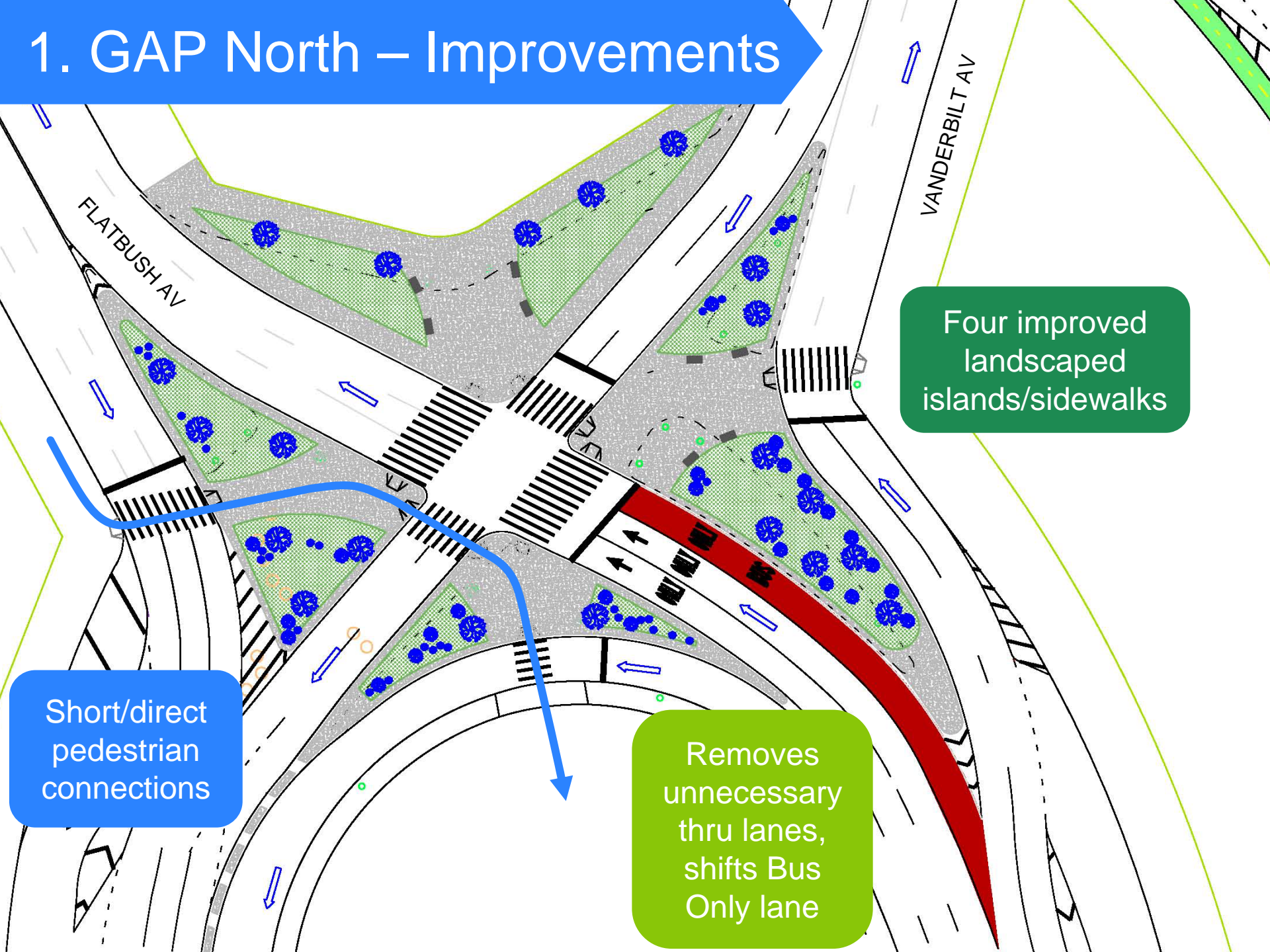
Lack of ADA ramps

Underutilized Roadbed

Confusing and unnecessary thru lanes



1. GAP North – Improvements

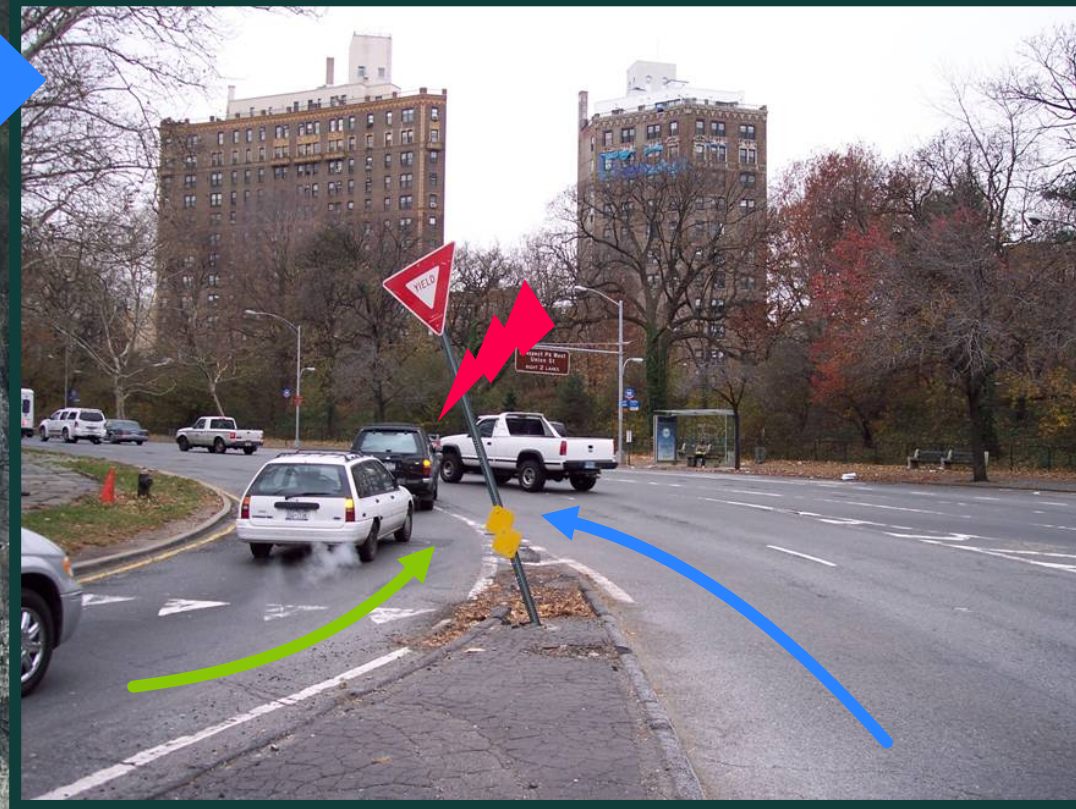
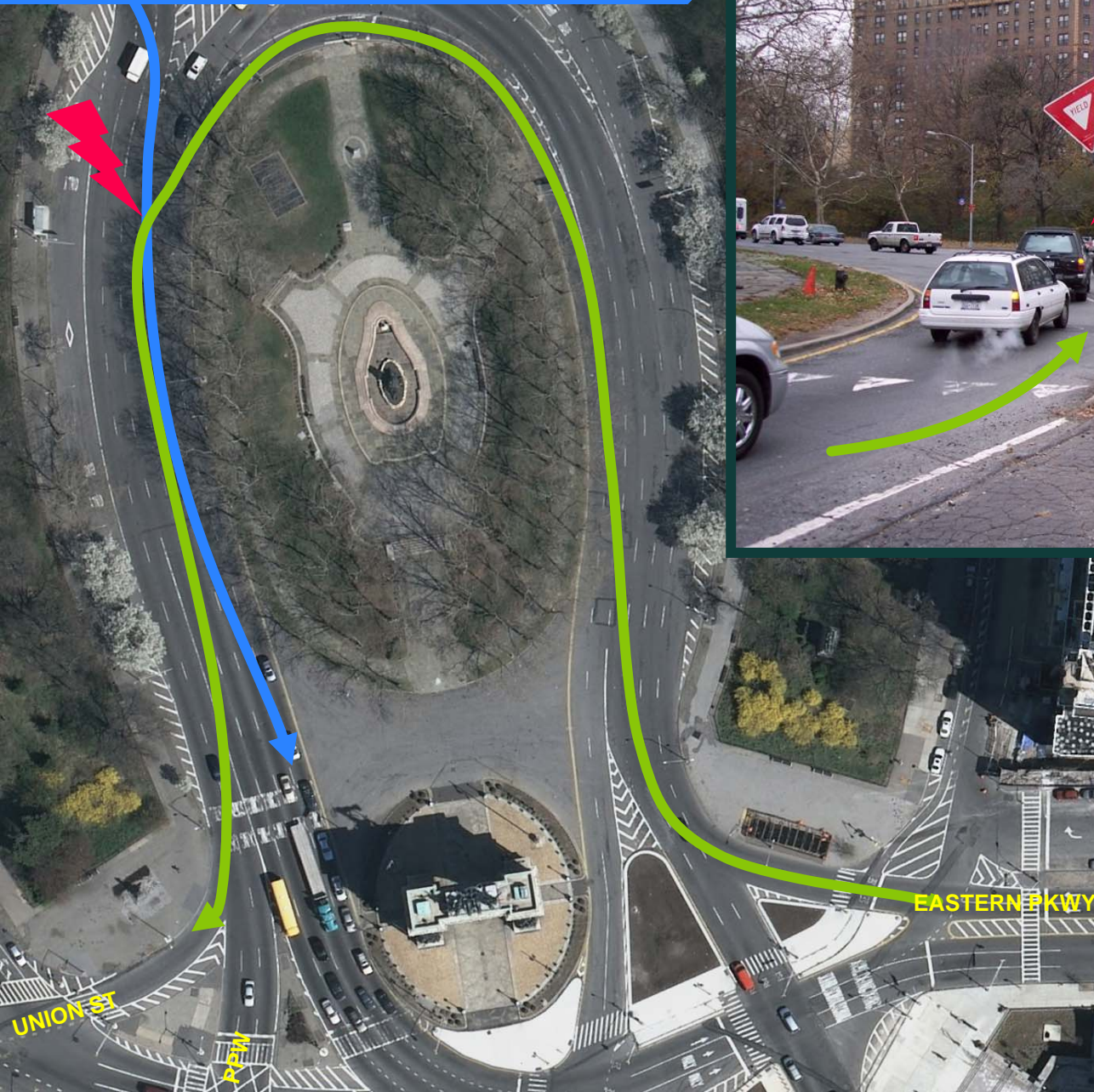


Four improved landscaped islands/sidewalks

Short/direct pedestrian connections

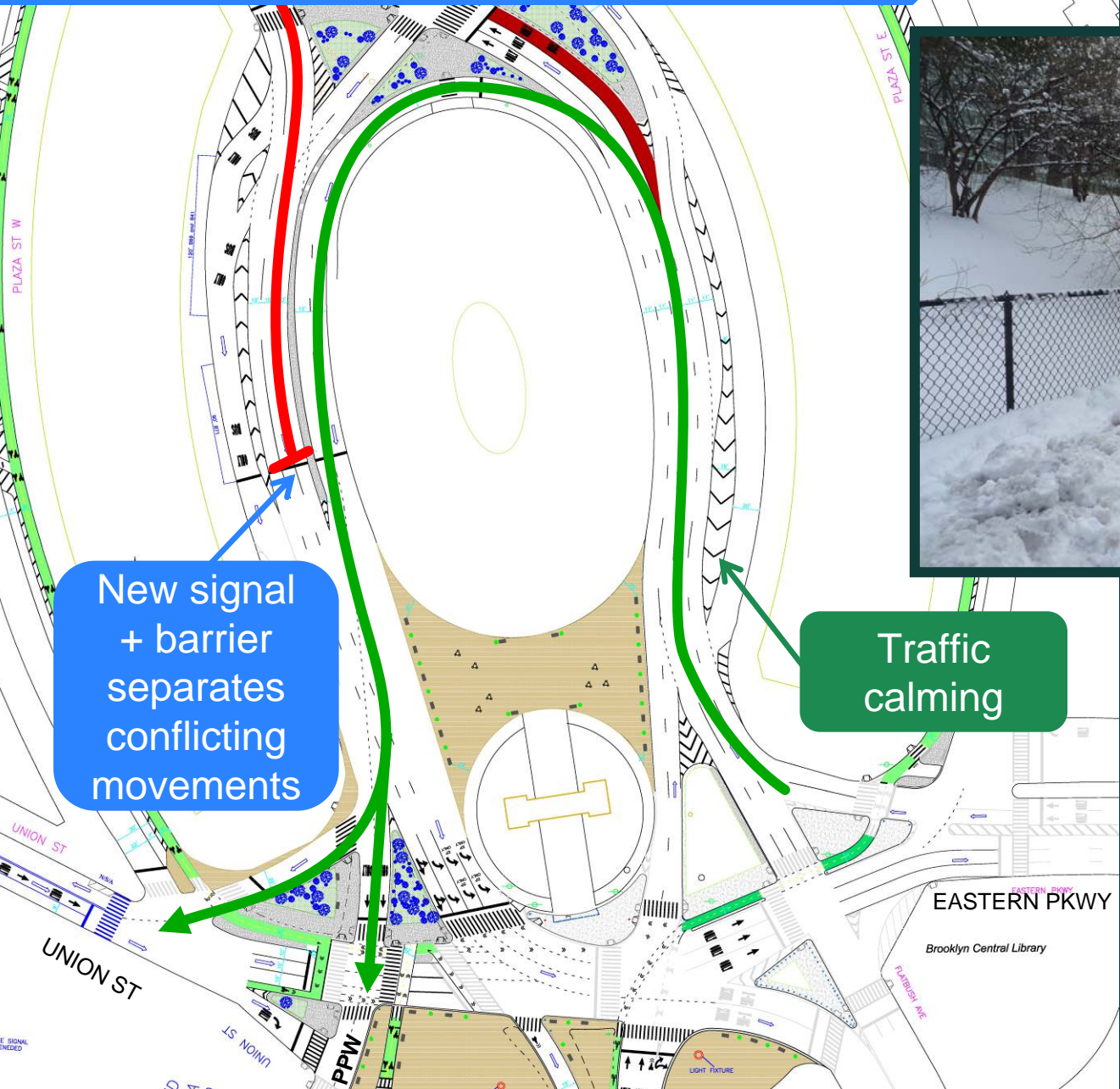
Removes unnecessary thru lanes, shifts Bus Only lane

2. Inner Ring Issues

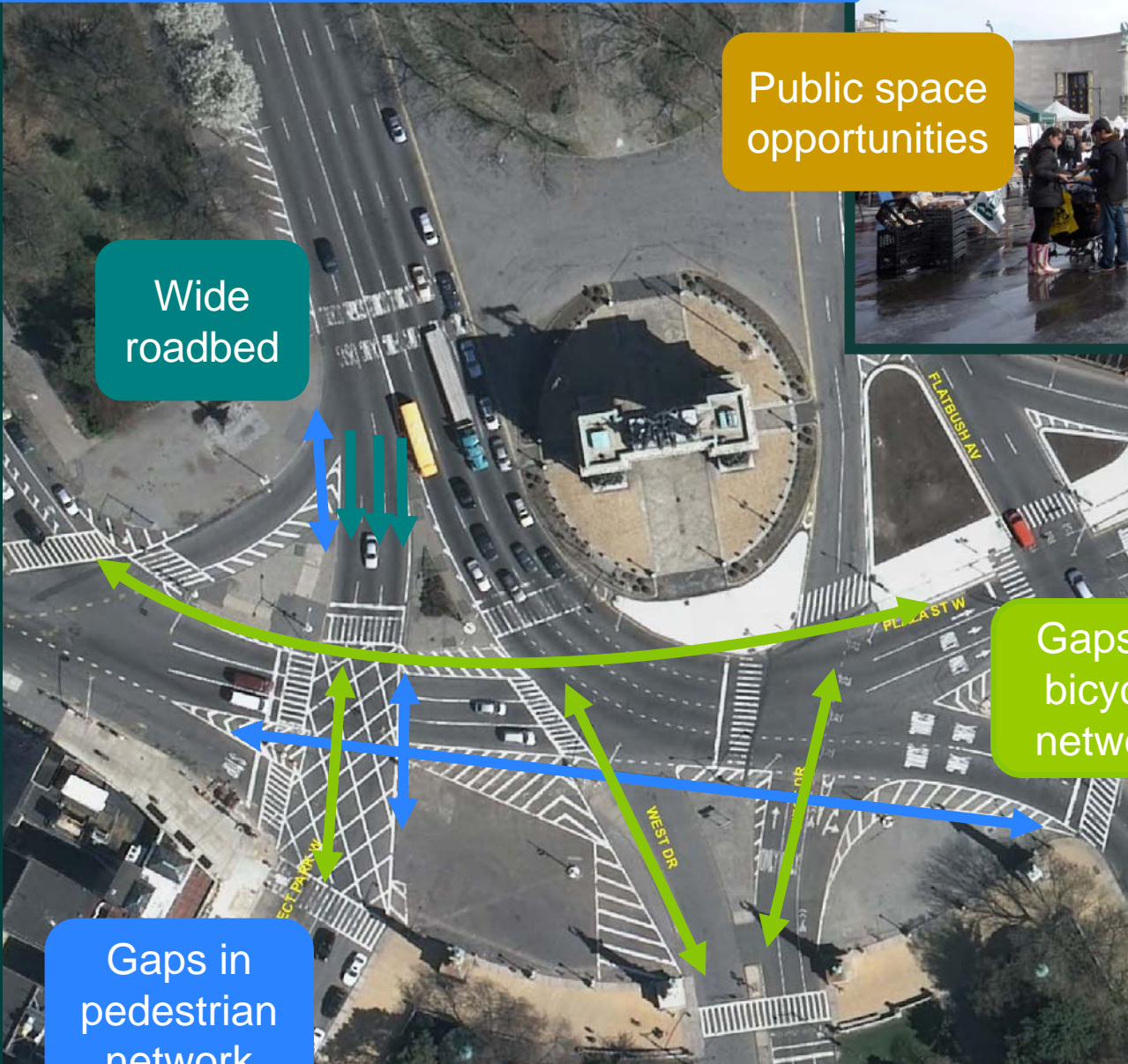


Difficult
multi-lane
weave

2. Inner Ring Improvements



3. GAP South – Issues



Public space opportunities



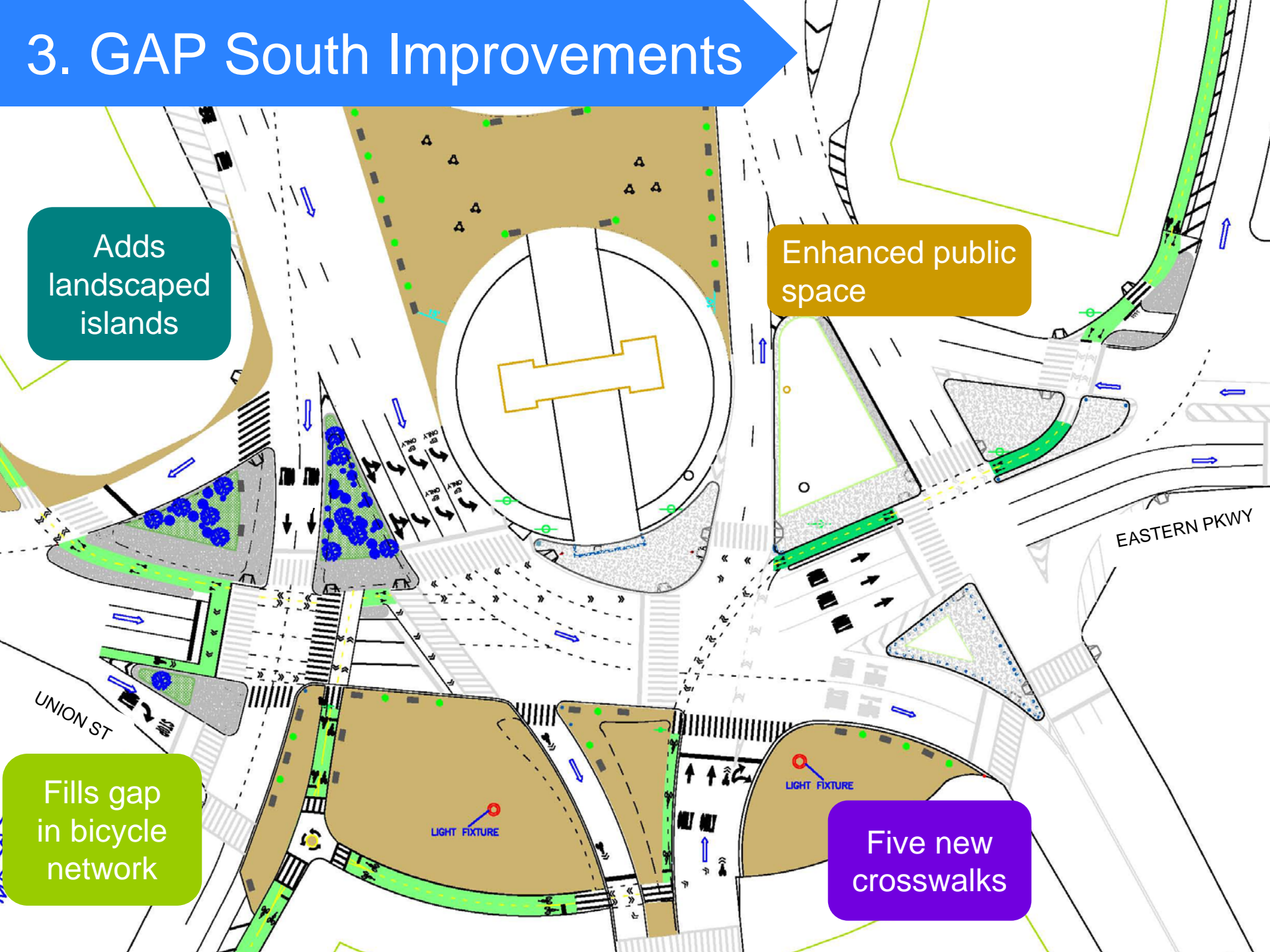
3. GAP South Improvements

Adds landscaped islands

Enhanced public space

Fills gap in bicycle network

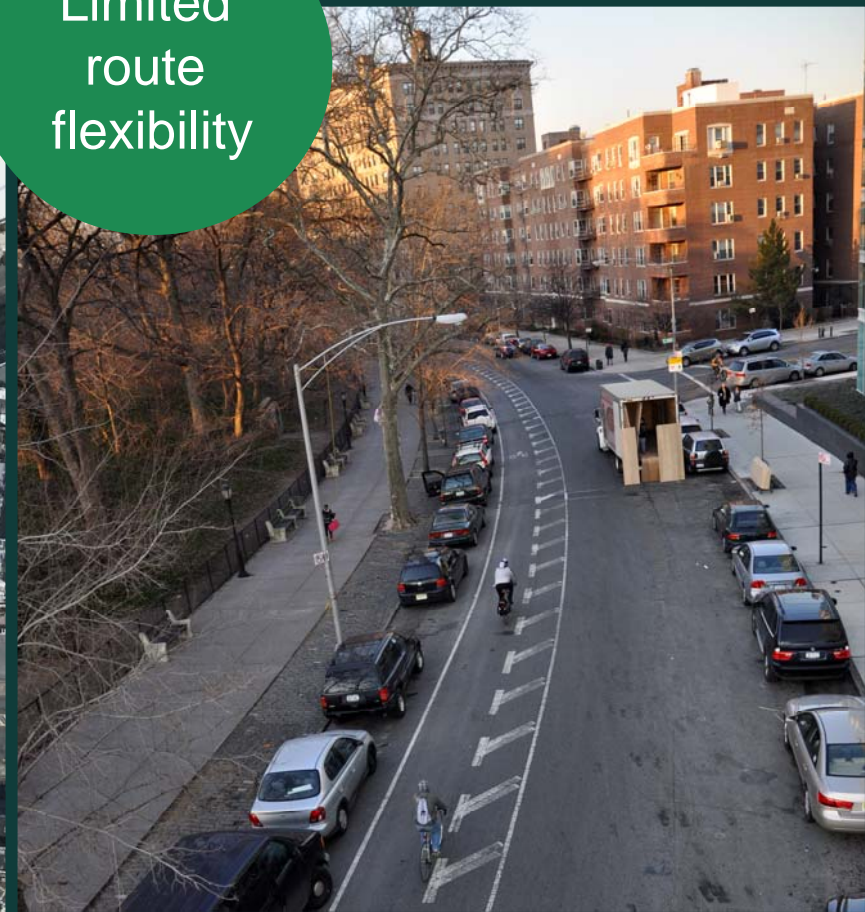
Five new crosswalks



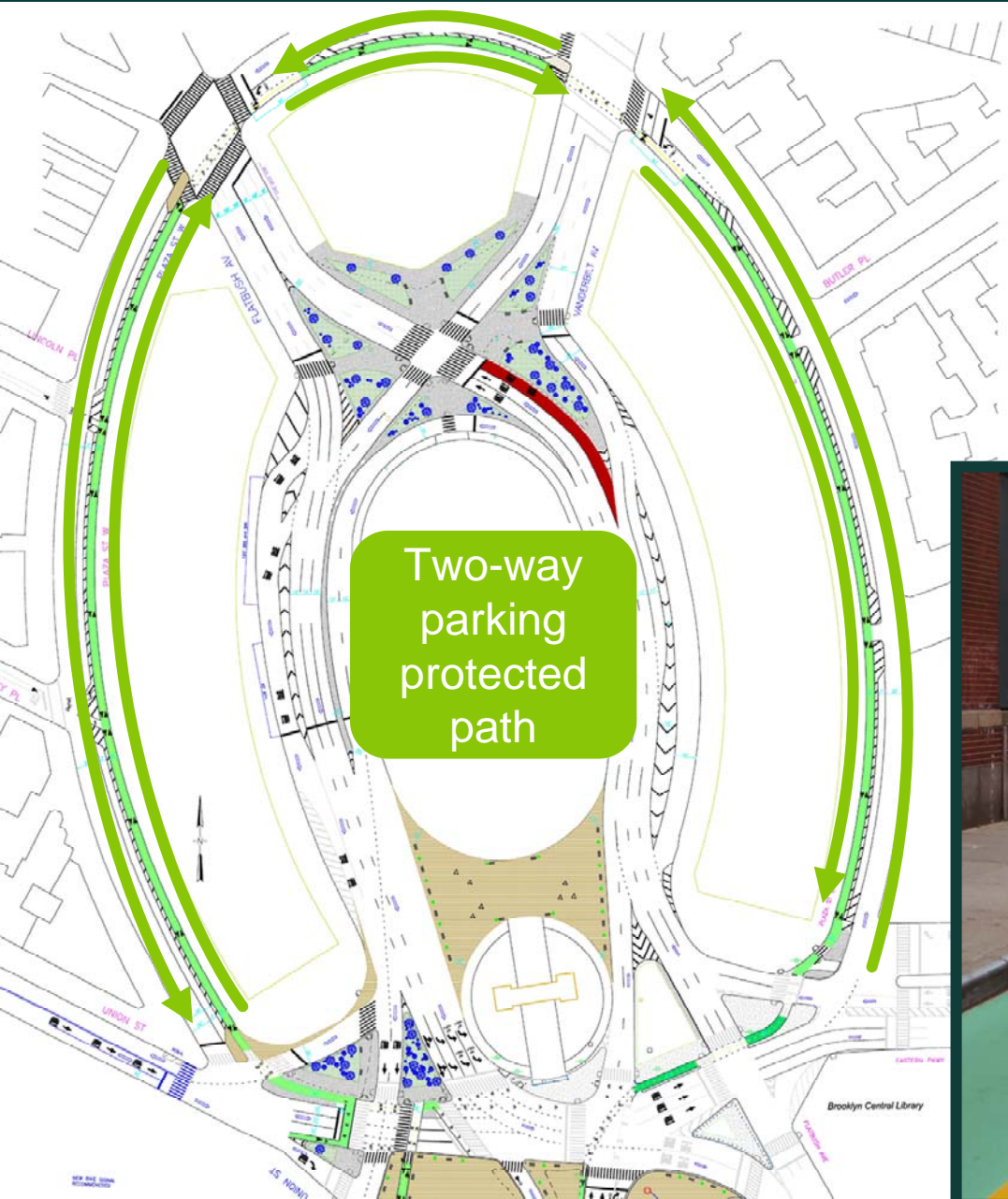
4. Plaza Streets- Issues



Limited route flexibility



4. Plaza Streets – Improvements

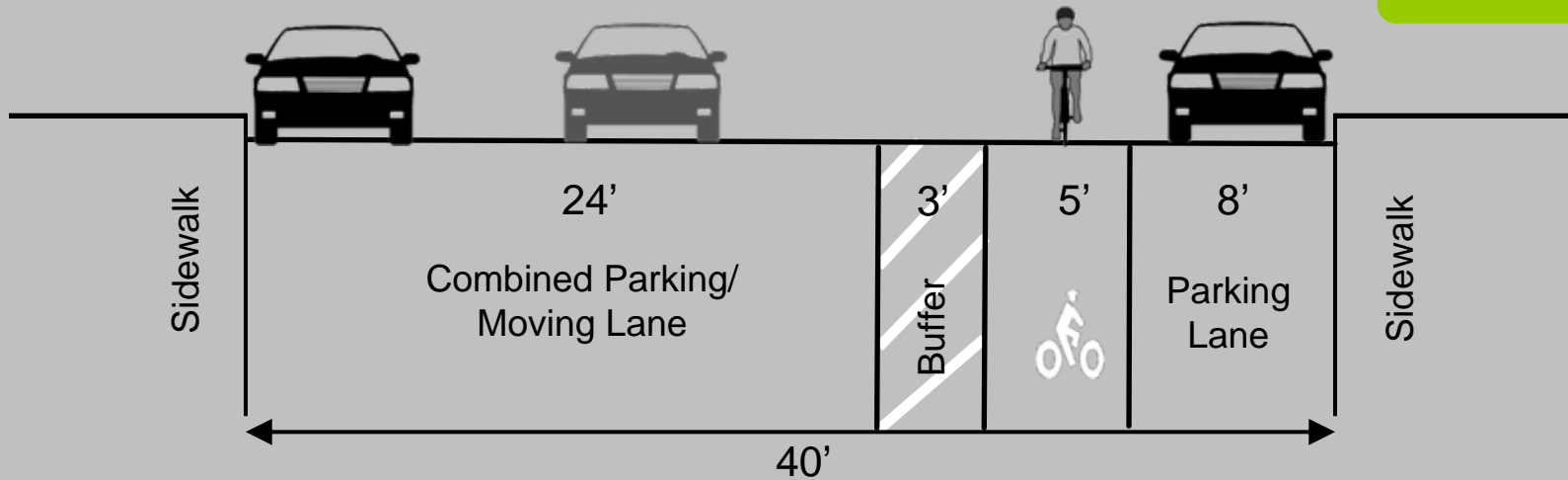


Safe + flexible
route choices

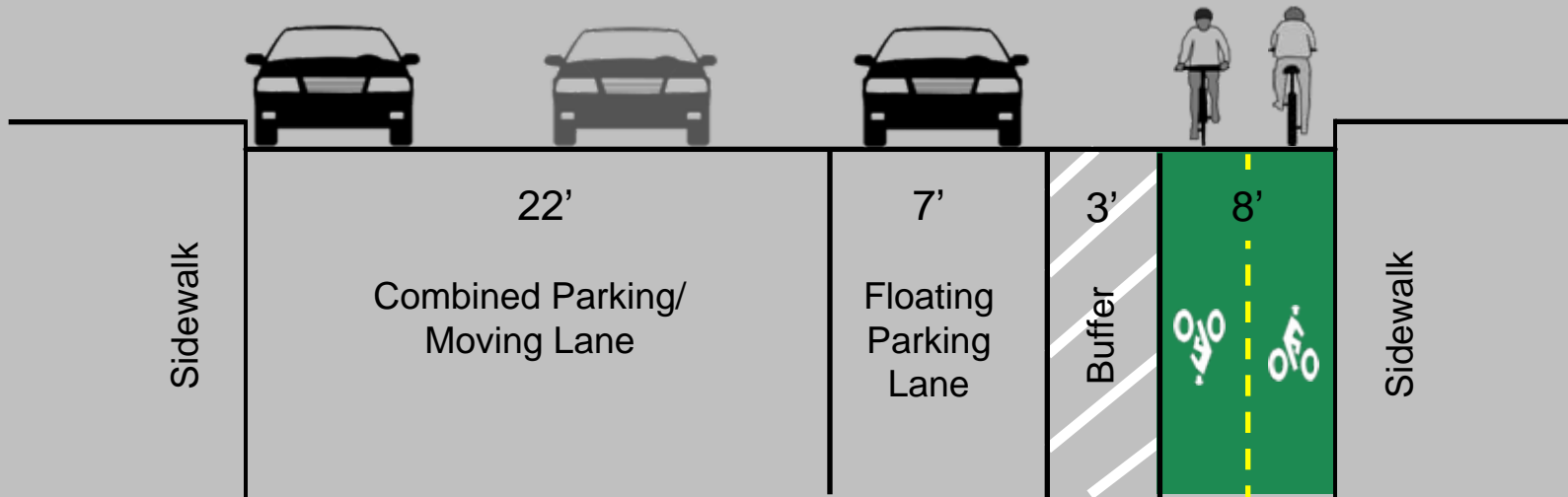


4. Plaza Streets – Improvements

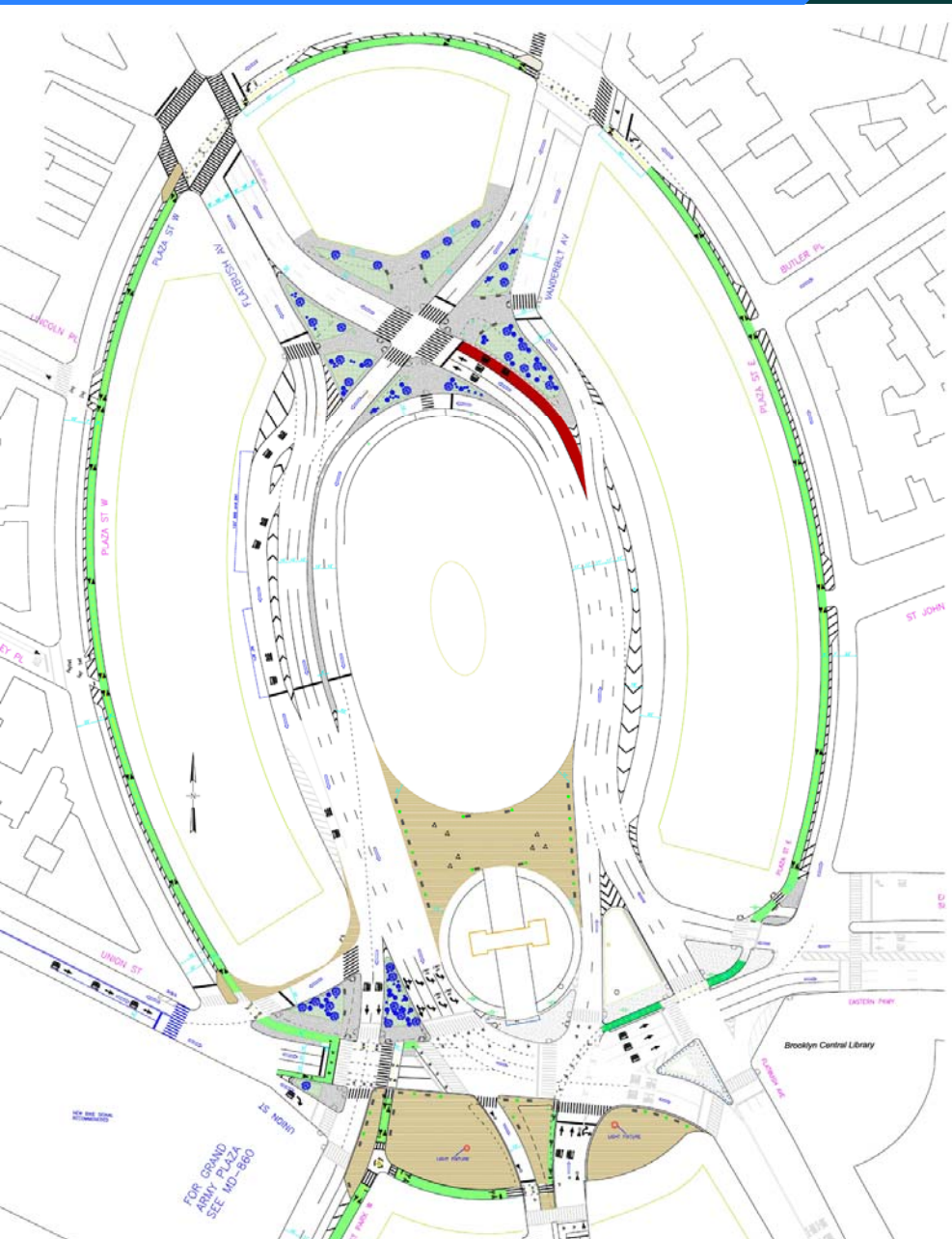
Existing



Proposed



Proposal Summary



1. Eliminates unnecessary thru lanes at the north + south intersections
2. Normalizes north intersection with landscaped islands + one new crosswalk
3. Signal separates westbound vehicles from southbound Flatbush traffic
4. Calms traffic on east side of inside circle
5. At southwest, constructs 1 new and 2 enlarged landscaped islands
6. Adds five new crosswalks to south end
7. Completes bicycle connections to southern area
8. Upgrades Plaza Street bike lane to two-way paths
9. Expands and enhances plaza spaces in front of park and between arch and fountain
10. Seamlessly integrates with Eastern Parkway and Prospect Park West projects



www.nyc.gov/dot

**Thank
You**